

Stephen came to Liege by train, Steph picked him up, and they headed down the Meuse (Maas) River to the southern most Dutch city of Maastricht





The romanesque church of Our Dear Lady

A bit of  
Maastricht's  
ramparts







The towers of St. Servatius





In a little side street, we found an old cloister and church...

...which now  
houses a book  
store!





# The town hall and market square



Floating  
over the  
train  
station in  
Maastricht





On our way to Annevoie we encountered several impressive, but unreachable, chateaux



A Belgian  
guard dog on  
the job





A beautiful day in Belgium



One of the mills at Annevoie



Classic cars in the parking lot





and some  
real exotics



When we learn there is a road rally going on...

...we stop for lunch to enjoy the show





There's John's  
Mustang!



Chateau Spontin, open every  
day...NOT!

A scenic view of a paved path lined with lush green trees, leading towards a body of water. A large, abstract stone sculpture is visible on the left side of the path.

The beginning of our Geology  
walk

There are sculptures popping up all over this village





The  
playground  
at a small  
school...

How cool is the use of this tree?



... including  
their own  
climbing  
wall





We walk through an old stone quarry...







...and bat education center

(It can't be that easy to educate bats)





Some art a little odder than others...



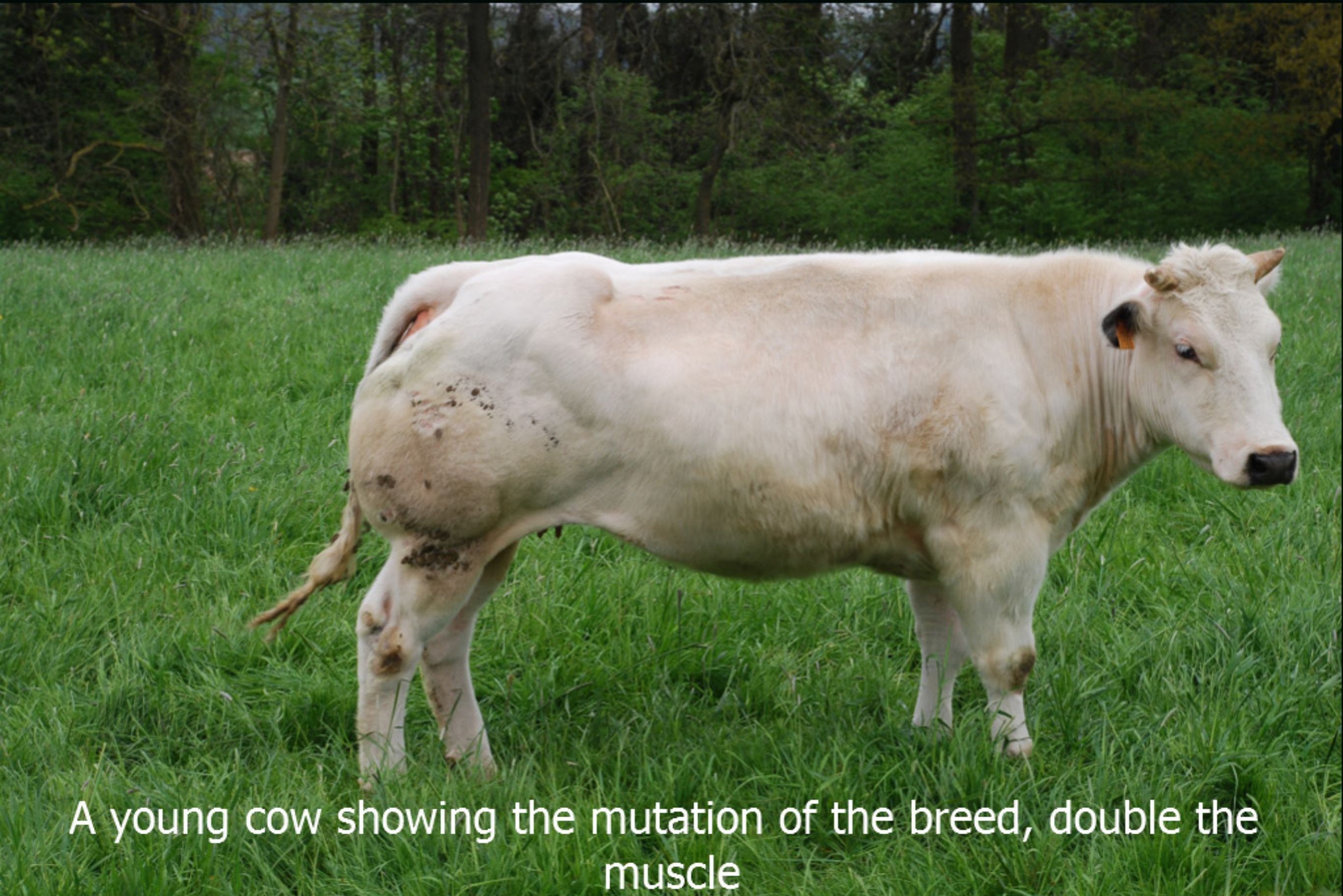




Some spectacular views of the Ourthe



A Belgian Blue bull protecting his harem of contented  
COWS



A young cow showing the mutation of the breed, double the muscle



Continuing our geology walk,  
a sand quarry





A beautiful example of the quadrangle farm



Architecture  
imitating nature







Fields of rape whose seeds are  
used for cooking oil





Yard art imitating  
architecture

# The Chateau Avouerie in Anthisnes





its 12th century  
staircase



and the local brew in the  
chateau cellar



A little stroll around Esneux







And an ice cream on the main drag



The village of Grez-Doiceau, and its idiot




No problem drinking and driving here, as long as the horses don't drink...



...but the tourists do!

including a shot of bee pee!



A row of old, rusty train cars is parked on a gravel track. The cars are made of dark metal and wood, showing significant signs of age and wear. The most prominent car in the foreground is heavily rusted and has several large, irregular holes in its side. Behind it, other cars are visible, some with wooden siding. In the background, a large, multi-story brick building with a corrugated metal roof and a staircase is visible. The sky is overcast, and there are some green trees and bushes to the left. The overall scene is one of industrial decay and historical preservation.

Now a visit to  
the coal mine  
at Blegny,  
near Liege



One must be properly attired to descend into the mine







The Blegny mine was the last to close, around 1980



The two "hills" in the distance are tailings from a mine



The palace of the Prince-Bishops  
in Liege



The columns mark the pillars of the demolished cathedral

You might recognize the escalier (stairway) in Liege, minus the candles





Examples of Mosan(of the Meuse)  
architecture



and a fine example of "La Vie Liegeoise"